



PPG

PACIFIC
PROPERTY
GROUP INC

MULTIPLE UNITS AVAILABLE

Unit R 11

Unit M 2

238 Sand Island Access Rd

Honolulu, HI 96819

OFFICE AND WAREHOUSE SPACES IMMEDIATELY AVAILABLE

Pacific Property Group is pleased to offer a prime leasing opportunity at 238 Sand Island Access Rd., Honolulu, HI 96819. This highly accessible location is just **minutes from downtown Honolulu, the airport, and the H-1 and Nimitz highway**, making it an ideal hub for businesses requiring seamless island-wide connectivity. With its strategic positioning in a well-established industrial and commercial district, this space provides both convenience and efficiency for a variety of business operations. Don't miss out on securing a spot in this sought-after location!

*Please note that this property features a ramp with a **12,000 lb. weight restriction** and a **14 ft. height clearance**, allowing access for **passenger cars and small trucks only**.

238 SAND ISLAND ACCESS RD

Unit M2

- Open floor plan with multiple office spaces throughout
- Dedicated conference room for meetings and collaboration
- Bright fluorescent lighting for a productive work environment
- Includes 5 parking stalls. Additional are available.
- Includes HVAC (air conditioning).
- Cost of utilities are not included.

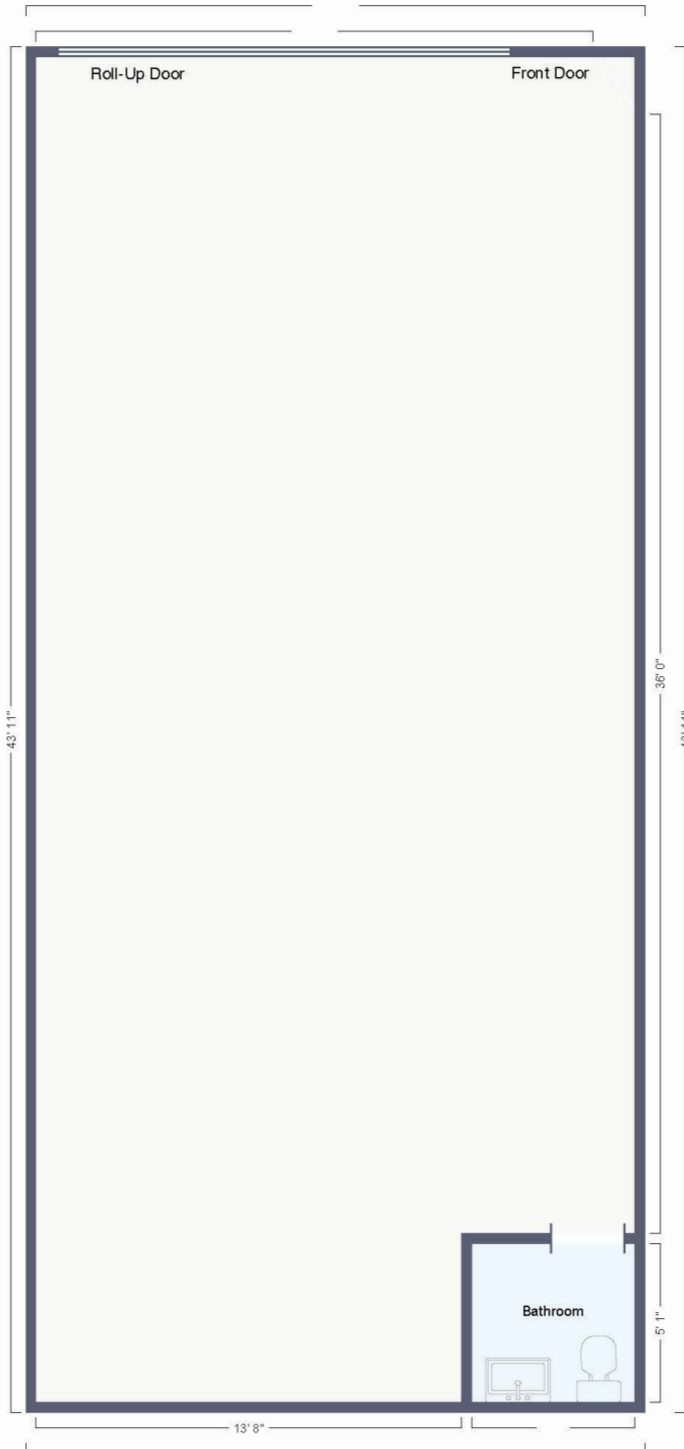
*2024 Cam

Unit M2 Property Photos

238 Sand Island Access Road, **Unit M2**, Honolulu, HI 96819



R-11 Floorplan



*Please note that this property features a ramp with a **12,000 lb. weight restriction** and a **14 ft. height clearance**, allowing access for **passenger cars and small trucks only**.

238 SAND ISLAND ACCESS RD

UNIT R11

- Spacious industrial warehouse with a **roll-up door** for easy loading and unloading
- Ideal for storage, distribution, or light industrial use
- Convenient access for trucks and deliveries
- High ceilings at **16 Ft** for ample storage capacity
- Includes **2 parking stalls**
- Cost of utilities are not included

SIZE (SF)

900

BASE RENT

\$1.70

CAM (PER SF/MO)

\$0.42*

*2024 Cam





Contact Us



Keane Omaye-Backman • Lic. (RS) 76415
keane@pacificpropertygrouphawaii.com
(808) 292-6861

Wyatt Santilena • Lic. (RS) 87287
wyatt@pacificpropertygrouphawaii.com
(808) 421-8556

Peter Grossman • Lic. (RS) 68843
peter@pacificpropertygrouphawaii.com
(808) 282-0086