

For Lease



746 Ilaniwai St

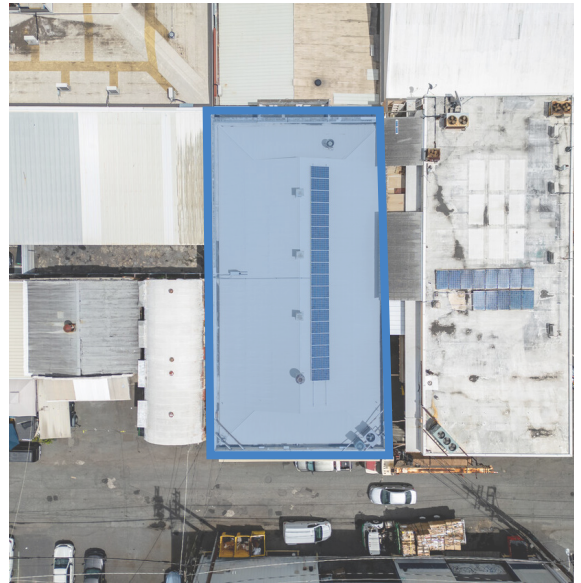
Honolulu, HI 96813

4,000 SF Second Floor Office Building

PPG

PACIFIC
PROPERTY
GROUP INC

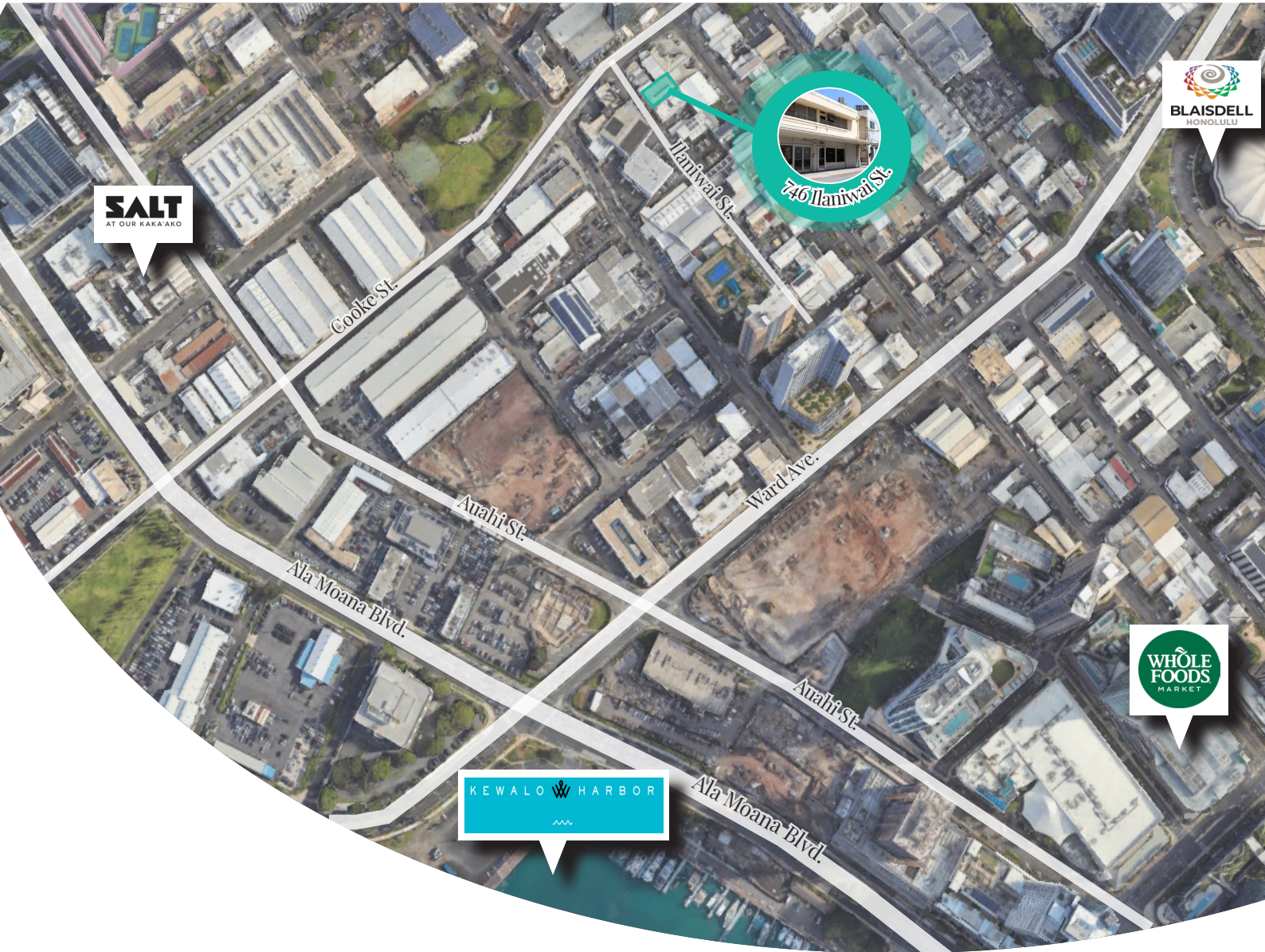
About 746 Ilaniwai St



Property Information

Located in the heart of Kaka'ako, 746 Ilaniwai Street offers a rare opportunity for office tenants in one of Honolulu's most vibrant commercial districts. This fee simple property features two concrete buildings with secure access and on-site parking. Approximately 4,000 square feet of office space is available on the second floor, offering flexible layouts ideal for creative or professional use. With excellent access to major thoroughfares and close proximity to downtown, this location is perfect for businesses seeking convenience and visibility in urban Honolulu.

Address	746 Ilaniwai St
Space Available	4,000 SF
Use	Office
Rent (\$/SF/Month)	\$1.25 SF
Year Built	1950
Construction	Masonry
TMK	1-2-1-050-030-0000
Features	Signage



Contact Us

Keane Omaye-Backman • Lic. (RS) 76415
keane@pacificpropertygrouphawaii.com
(808) 292-6861

Peter Grossman • Lic. (RS) 68843
peter@pacificpropertygrouphawaii.com
(808) 282-0086

Wyatt Santilena • Lic. (RS) 87287
wyatt@pacificpropertygrouphawaii.com
(808) 421-8556